

CROPWATCH

23 September 2020

September Reminders

Fruit Growers Victoria

Watch for plague thrips during blossom – All crops

Monitoring for Apple Dimple Bug (pink stage onwards) – Apples

Scab cover sprays – Apples & Pears

Woolly aphid butt drench or fertigation applications - Apples

Trapping Codling Moth – Apples and Pears

Mating disruption – Apples and Pears

Start monitoring Mealybug – Pears

Weekly Weather Outlook links

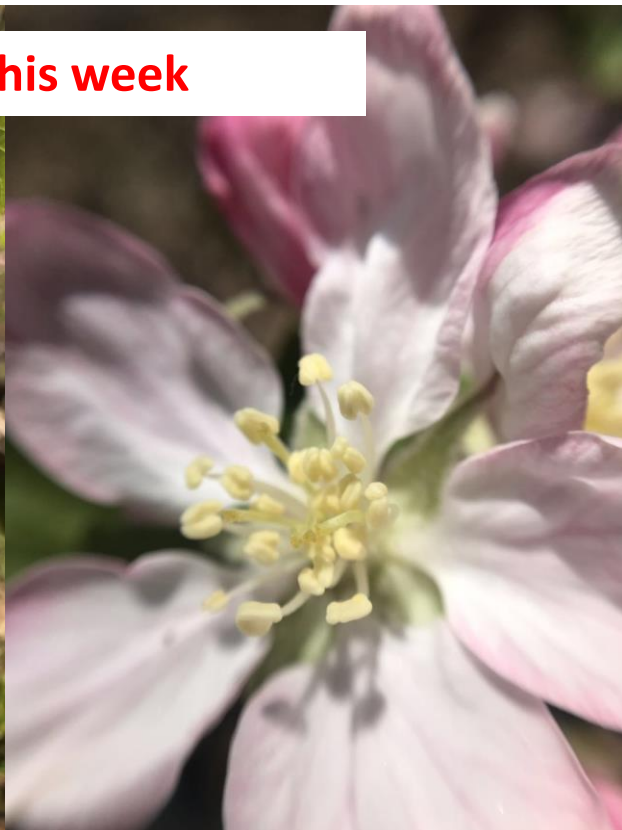
Detailed weather for all areas

- [Tatura](#)
- [Shepparton](#)
- [Cobram](#)
- [Coldstream \(Yarra Valley\)](#)
- [Lysterfield](#)
- [Pakenham](#)
- [Moorooduc \(Mornington Peninsula\)](#)
- [Harcourt](#)
- [Drouin](#)

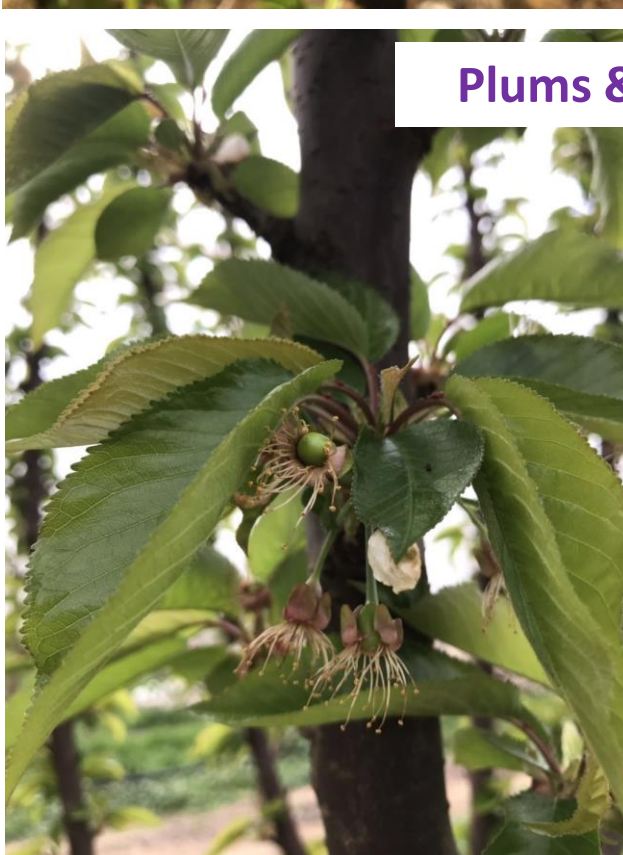
Around the Orchards



Apples this week



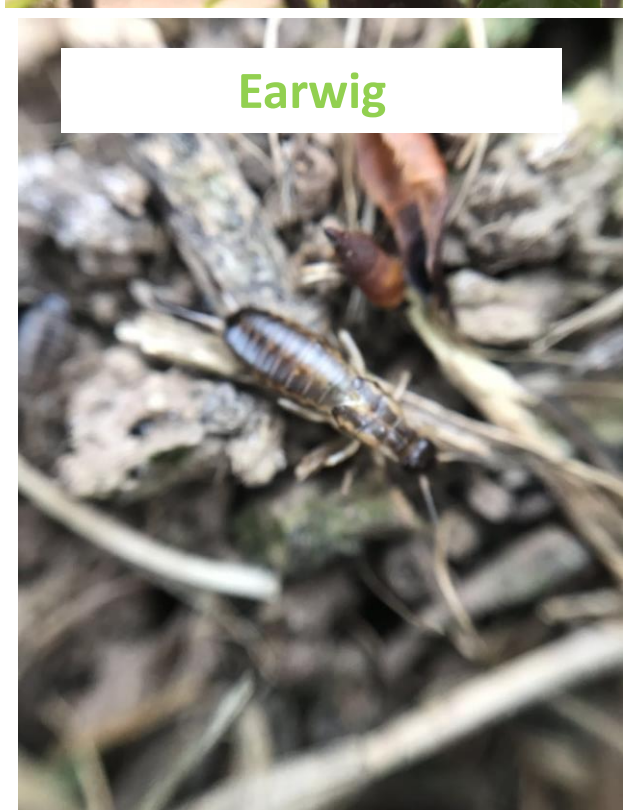
Pears



Plums & Peaches



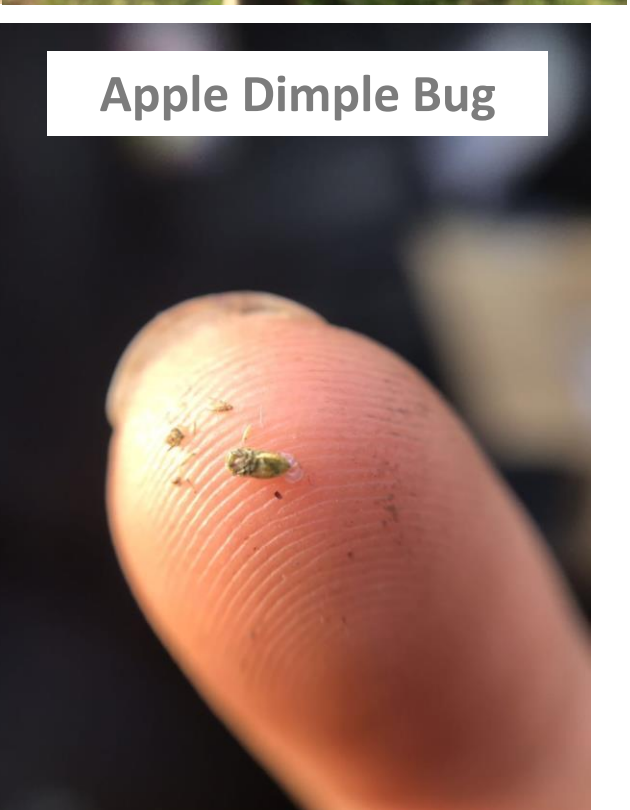
Cherries



Earwig



CM



Apple Dimple Bug

Agronomic Advice

Aphid – over the last 4-5 years seeing an increase of populations where excess insecticides are used. Monitor and only spray if no parasitism seen.

Thrips – monitor daily during warm spells, try to avoid using synthetic pyrethroids where possible.

LBAM – always look for a second peak of moth numbers prior to setting a biofix. Egg hatch predicted for 22-23 September (GV). Bt's (Dipel) best control this time of year and do not disrupt IPM.

Apple Dimple Bug – Always a challenge to decide best chemistry to avoid disrupting IPM, key is regular monitoring and protect king bloom. If using Neonics or Organophosphates, apply at Pink to avoid disrupting bees over blossom.

QFF – when resetting traps this season noticed high numbers of dead overwintered QFF which suggests a spike post harvest last season. Wet weather outlook means a high-pressure season for QFF ahead, be setup for baiting earlier than normal this season.

Pear Blister Mite – seeing some patchy blocks with blister mite damage, not much can be done now, mostly carryover from last season miticide program.

Earwigs – some light feeding damage on pear buds showing traces damage, earwigs are great predators so only a concern when numbers extremely high or within tree guards.

Apple & Pear scab – recent wet weather and forecasted wet spring will see higher pressure season for scab, always apply preventative sprays close to possible infection rain events and curatives within kickback periods stated on product labels.

Links of interest

ATS effectiveness - <https://apal.org.au/webinar-improving-ats-effectiveness/>

Apple Dimple Bug thresholds - <https://extensionaus.com.au/ozapplepearipdm/variable-spray-threshold-for-mainland-apple-dimpling-bug/>

Apple & Pear Scab - <https://www.dpi.nsw.gov.au/agriculture/horticulture/pomes/pests-etc/apple-and-pear-scab>

Disclaimer

The advice provided in this publication is intended as a source of information only. Always read the label before using any of the products mentioned. FGV and its employees do not guarantee that the publication is without flaw of any kind or is wholly appropriate for your purposes and therefore disclaims all liability for any error, loss or other consequence which may arise from you relying on any information in this publication.