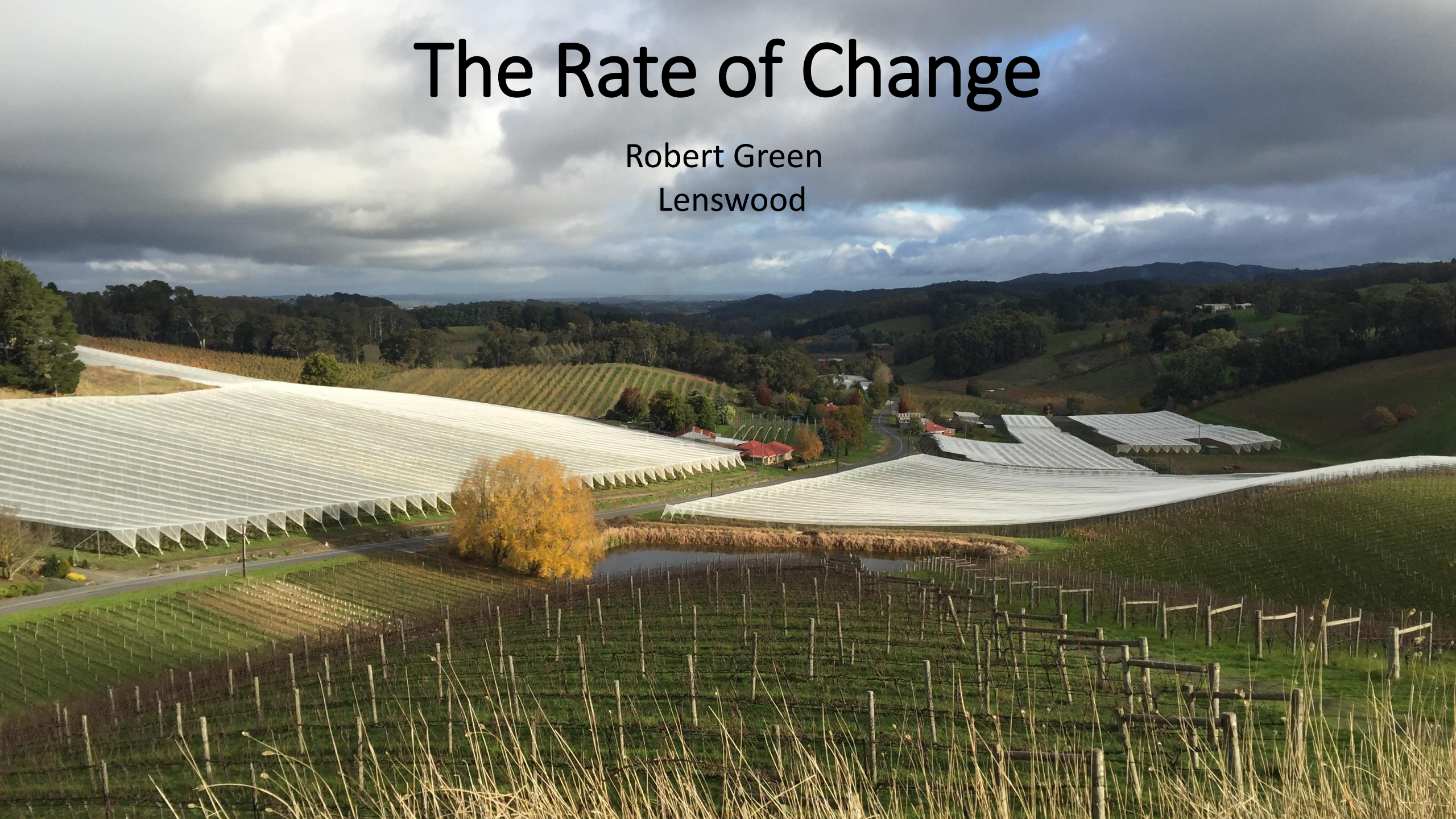


The Rate of Change

Robert Green
Lenswood



1985

330 trees/Ha

Variable fruit quality

Older varieties

Low yields

Time for a change



1986

1000 trees/Ha

Semi dwarfing MM106 rootstocks

trellis

First M26 block planted 1989

Fuji, Gala, Pink Lady – All winners



Water Management

Our most limiting resource

Drip irrigation

Scheduling



Automatic filter bank

Variable speed drives

Irrigation controller

Fertigation



Home grown solution

Wireless valve control



Solar pumping

Will we be carbon neutral by sometime soon?

Other food categories will be

Retailers will ask then demand we fulfill there desire to meet a low or no carbon footprint



1999 - 2015

M9, M26 2850 Trees/Ha

High coloured Pinks, Gala, Rockit and Bravo

The growing system became important



Dwarf rootstocks

They will never fill
the space

Enter the
Root pruner



2007-17 Hail net – birds, sunburn climate----

Home grown platform

Until 2016 no hail



2017, 2018, 2021



2019



Travels at 31km/h

20 minutes/25km to stop



Orchards are about as nimble

2022 – The Challenges

The domestic market category is in decline

Exports have virtually ceased

Australian Apple production has and will continue to increase faster than demand.

Covid is not helping

Rising input costs

Interest rates

Labour availability

Here's a list of a few things you might need

Good records

A management system

Individual block performance

Start pruning – cut out the dead wood



Sad but true



20+ new varieties next 3 years?

Club varieties?

Which growing system?



You will need some
Preferably cast iron

Thank you

