



Traceability

Neil McSkimming

Agriculture Victoria Policy

And

Kieran Murphy

Agriculture Victoria Research

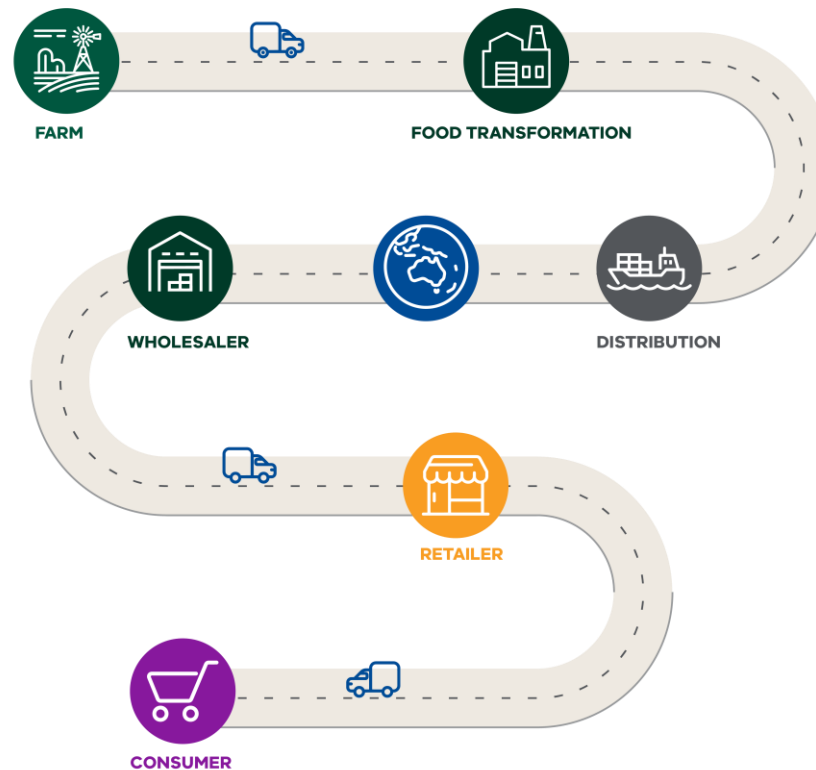
Contents

- 1) What is traceability?
- 2) Why is traceability important?
- 3) National and State investment in traceability
- 4) How to get involved
 - Agriculture Victoria's SmartFarm Research on traceability

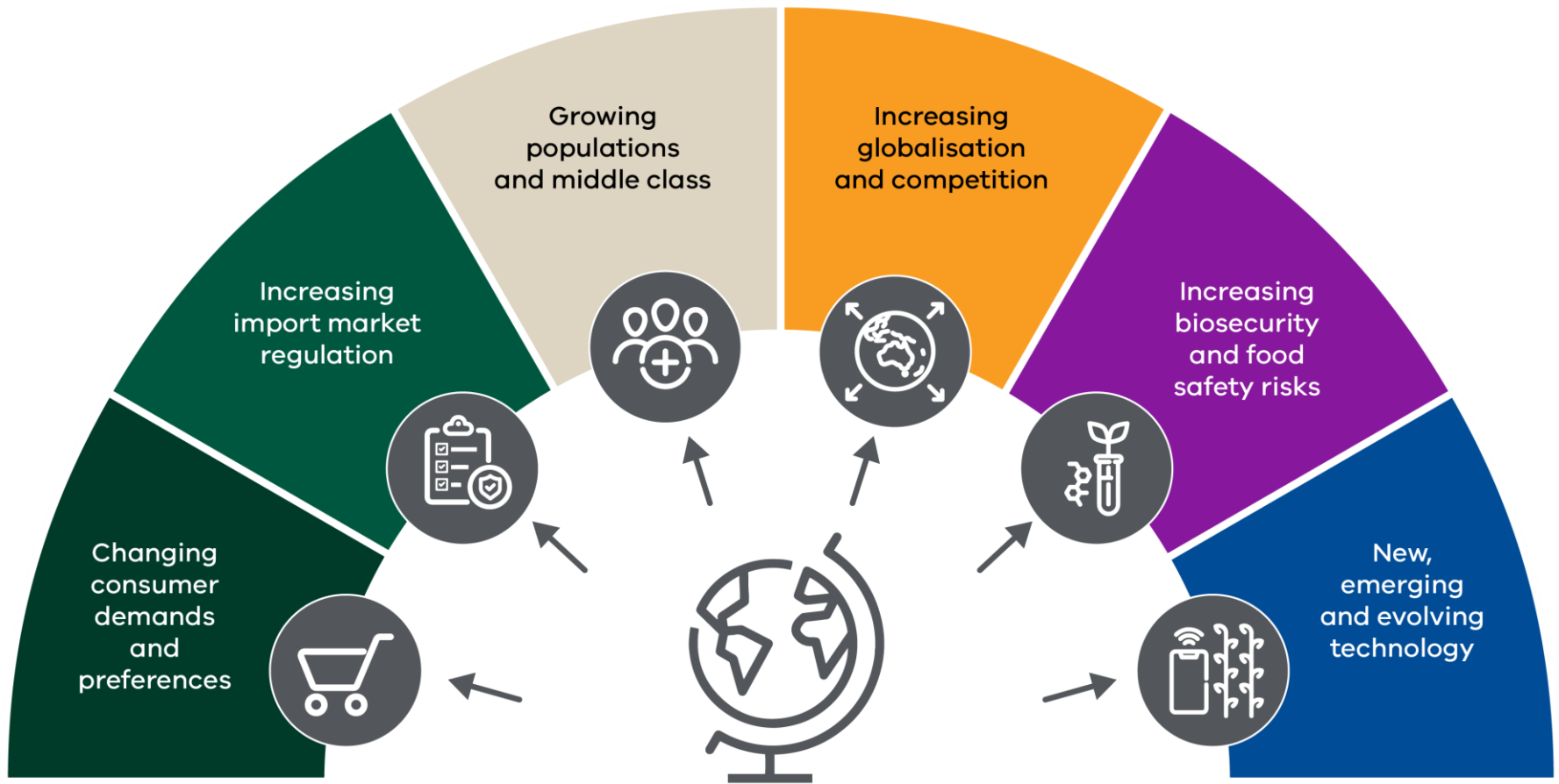
What is traceability?

The ability to **share information** about, and **follow the movement** of, a **product** through **all or part** of its supply chain.

Example supply chain



Global trends and drivers for traceability



Why is traceability important?

An effective traceability system can **confirm compliance**, **support a brand** and **improve productivity**.



How does Victoria's supply chain traceability performance compare globally?



Summary of findings for horticulture



Move from paper to digital



Improve awareness of the benefits



Some competitors are moving quicker to digital



Collaboration is needed to enable change



TRACEABILITY



Cover your business

IBM

Walmart & IBM are envisioning a fully transparent 21st century digitized food system

In case of a food safety issue, how to do traceability in minutes/ seconds instead of weeks ?

SOURCE: Frank Yiannas and Walmart are the source for this slide content. #Walmart #IBM

© 2017 IBM Corporation



Recent Government investment in traceability

- **Commonwealth Government: \$68.4 million**
 - Export trade program
 - National traceability strategy
 - Globally connected export assurances.
- **Victorian Government: \$15 million**
 - Education and tools
 - Improving government systems
 - Pilot projects, research and SmartFarms.



TRACEABILITY

OFFICIAL



Traceability research – Fruit Growers Victoria

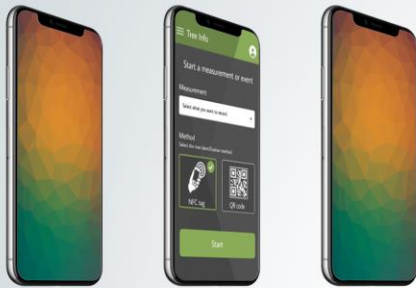
Objectives:

- **Fruit traceability** — identify traceability harvest technologies and data exchange standards to pilot and prototype with apple and pear growers
- **Orchard system traceability** — targeted use cases with partners to fast-track new measurement and harvesting technologies, supporting orchard traceability
- **Technology integration traceability** — deploy systems capable of integrating with existing or new farm management software and hardware systems.



Traceability – orchard and harvest applications

Deployed In Production



Traceability Harvest App

Orchard Data App

Commercial Orchard App (Growfruit)

In Development



Traceability Grader Processing App

Planned



Traceability Harvest App (Robotics)



Traceability Harvest App (Picking Platform)



AVR Orchard Manager App



Other Commercial Apps



API Service Suites



Orchard Suite



Traceability Suite

Commercial Systems

- Commercial Orchard Systems
- Other Commercial Orchard Systems (Packing, Disinfection etc)

AVR Research Systems

- AVR Orchard Database / System

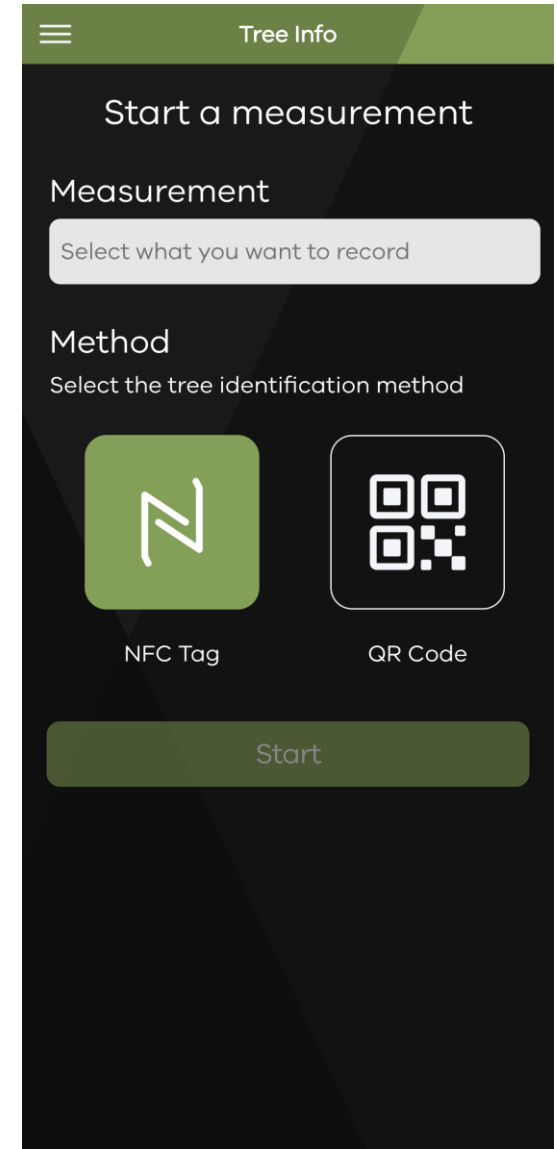
- Commercial Fruit Traceability Database / System

- AVR Fruit Traceability Database / System

Traceability Service Architecture and Deployment Options

Trial farms and integration opportunities

- Practical solutions that start in the orchard – full product traceability.
- Looking to partner with commercial farms and service providers to explore service integration.
- Tatura SmartFarm has demonstrator service and connected research opportunities – fruit quality sensing.
- Lets talk!



Thanks

Contact:

Kieran Murphy

Agriculture Victoria

kieran.murphy@agriculture.vic.gov.au